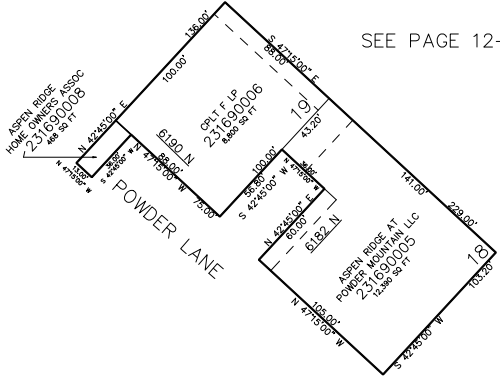


PART OF SECTION 6, T.7N., R.2E., S.L.B. & M.  
**ASPEN RIDGE AT POWDER MOUNTAIN 2ND AMENDMENT**

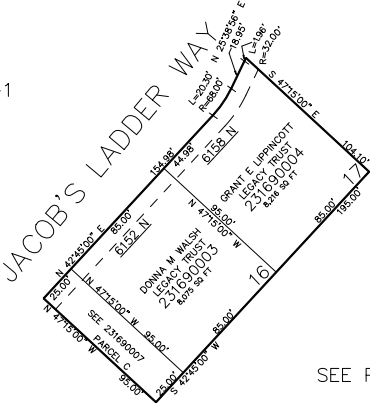
IN WEBER COUNTY  
SCALE 1" = 60'

TAXING UNIT: 542

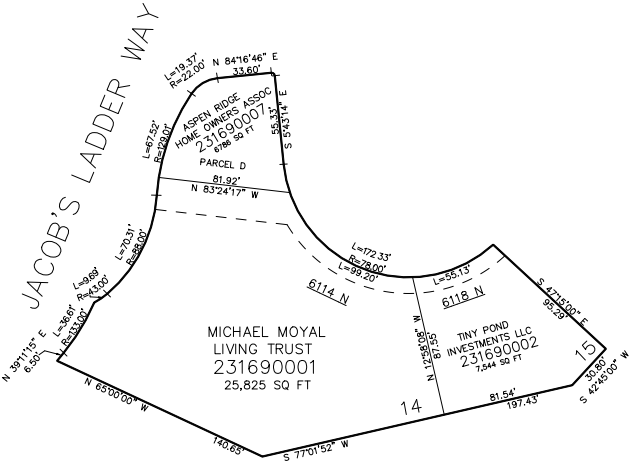
SEE PAGE 12-1



SEE PAGE 12-1



SEE PAGE 12-1



SEE PAGE 12-1

10' UTILITY & DRAINAGE EASEMENTS EACH  
SIDE OF PROPERTY LINES AS INDICATED  
BY DASHED LINES EXCEPT AS OTHERWISE  
SHOWN.

FOR COMPLETE ENC DATA SEE  
ORIGINAL DEDICATION PLAT IN  
BOOK 94, PAGE 19 OF RECORDS.